



An Overview of Roads

February 19, 2023

Local Roads Presentation for Townships



  @Washtenawroads



Topics to Cover

- Overview of WCRC
- Jurisdictions
- Funding
- Improving Local Roads



OVERVIEW OF WCRC



WCRC Stats

- Responsible for:
 - 1652 miles of county road
 - (743 miles unpaved)
 - 125 bridges
 - 2,500+ culverts
 - 31,000 signs
- Contracted to maintain 598 lane miles of MDOT routes (US 23, I-94, M-14, US-12, etc.)



Routine Maintenance vs Road Improvement

Routine Maintenance

regular upkeep of our road system to delay or prevent failure.

Road Improvement

upgrades, extension, & enhancements to any existing road.

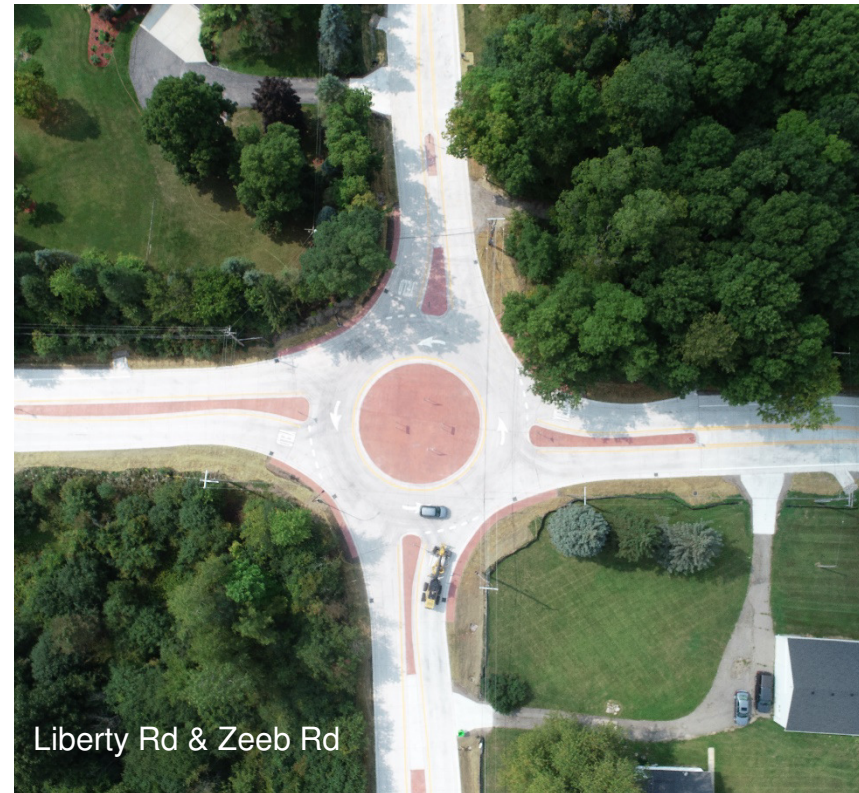
Routine Maintenance

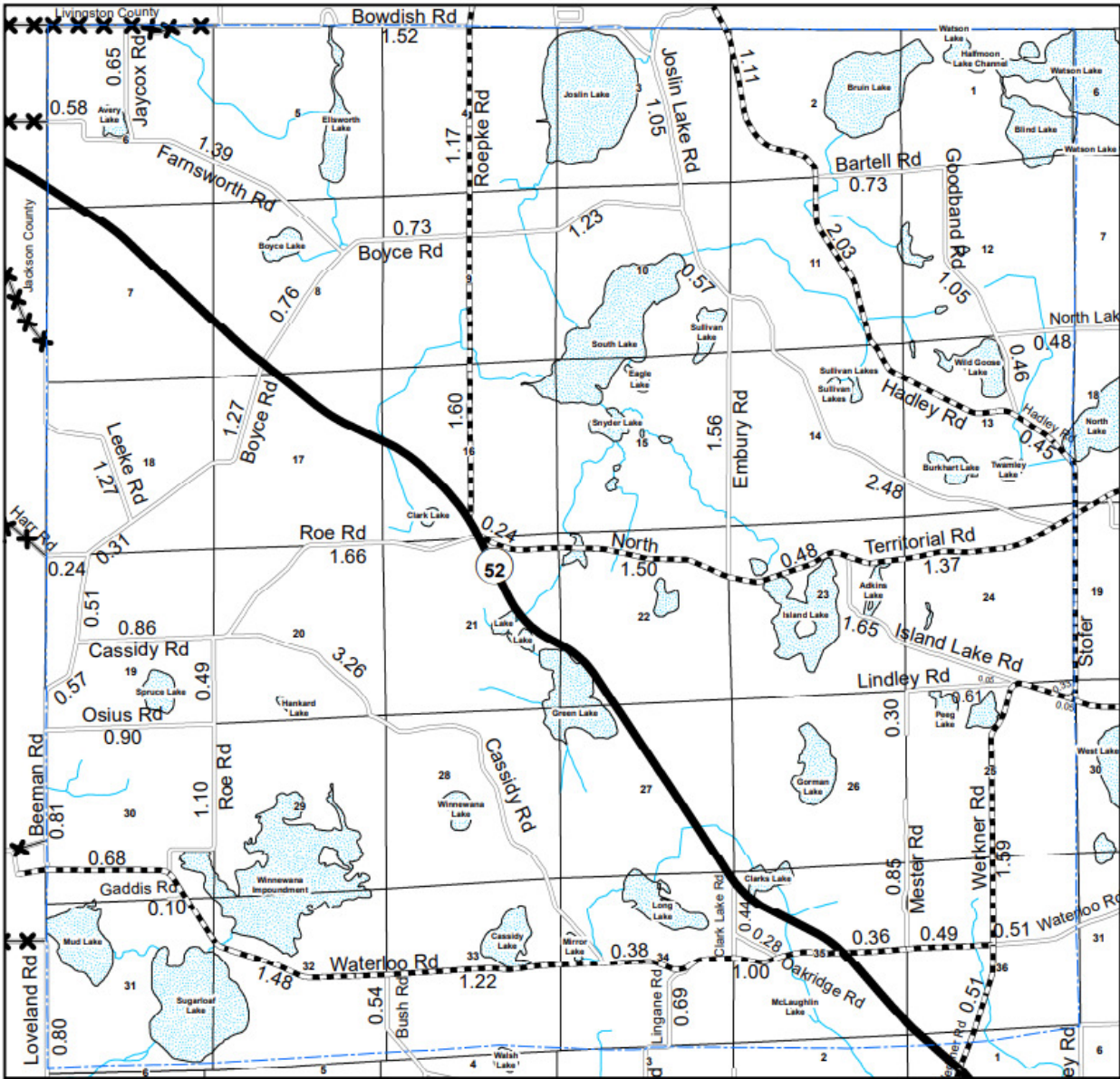
- Snow and ice removal
- Storm clean-up
- Pothole patching
- Drainage
- Grading
- Guardrail repair
- Culvert/bridge maintenance
- Berm removal
- Signs & Signal Repairs



Road Improvements

- Roundabouts
- Bridge replacement
- Widening
- Paving
- Limestone Resurfacing
- Signs and signals upgrades
- Drainage Improvements



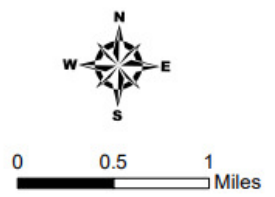


- LEGEND**
- State Trunkline
 - County Primary
 - County Local
 - Railroad
 - City or Village Street
 - Adjacent County
 - Township Line
 - City or Village Boundary
 - Lake/River

PRIMARY ROAD SYSTEM IS 18.04 MILES
 LOCAL ROAD SYSTEM IS 35.21 MILES

I HEREBY CERTIFY THAT THE ROADS SHOWN HEREON BY SYMBOLS LOCAL ROADS ARE IN USE AND ARE UNDER THE JURISDICTION OF THE COUNTY ROAD COMMISSION.

LYNDON TWP.



County Roads

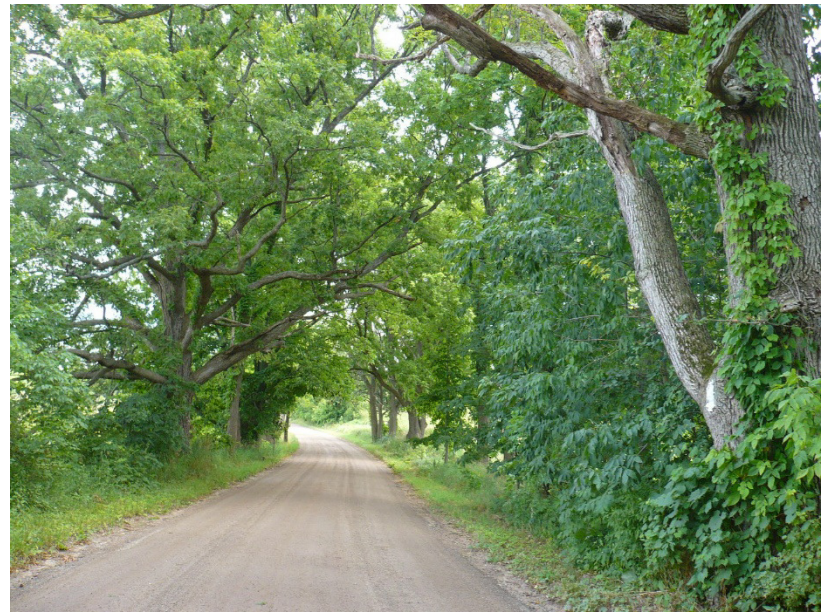
- **Primary roads** connect communities
 - 593 miles in Washtenaw County (78 unpaved)
 - Examples:
Jackson Rd, Saline-Milan Rd, Pontiac Trail



Classification is determined at the state-level as outlined in Act 51 of 1951.

County Roads

- **Local roads** connect people to their homes, including subdivision roads
 - 1,060 miles in Washtenaw County (665 miles unpaved)



Asset Management - Definition

- “Ongoing process of **maintaining, preserving, upgrading,** and operating physical assets **cost-effectively,** based on a **continuous physical inventory and condition assessment and investment** to achieve established performance goals.”

Asset Management

Due to funding challenges, we must be very strategic with limited funds....that means we use **Asset Management**.

Asset Management Plan

- Are you going to maintain or improve?
- How much do you want to spend?
- What is the timeline?
- What is the Township's end goal?



FUNDING

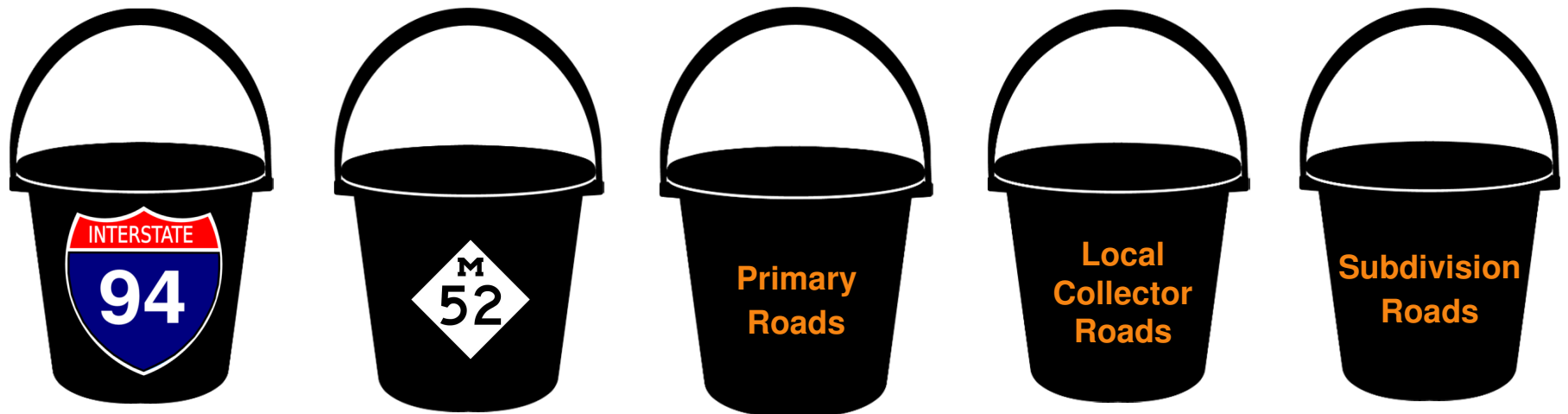


Michigan Transportation Fund (MTF) Formula

- MTF is distributed through the Act 51 formula:
 - MDOT = 39%
 - County road commissions = 39%
 - Cities and villages = 22%

The 5 Buckets

- Different types of roads are eligible for different funds
- No bucket has enough



County Primary Roads



- Purpose: Connect local communities
 - (i.e., Jackson Rd)
- Funding entities: WCRC
- Main funding sources
 - MTF – county portion
 - Federal
 - County millage

Local Collector Roads



- Purpose: Connect homes and businesses to primary roads
- Funding entities: WCRC and township
- Main funding sources
 - MTF
 - Township funds

Subdivision Roads



- Purpose: Provide access to people who live/work there
- Funding entities: WCRC and township
- Main funding sources
 - MTF
 - Township funds
 - Special Assessment Districts



IMPROVING LOCAL ROADS



Unique Partnerships

- We each have a role to play
 - WCRC is responsible for maintaining roads
 - Townships make land-use decisions that impact traffic
- Act 51 requires a financial partner on major local road improvements



Local Road Matching Program

- WCRRC's local matching program
 - In 2024, the Local Road Matching Program is \$ 2 million
 - Lyndon Twp \$55,655
 - WCRRC staff work with township to prepare estimates
 - Township board decides how much to invest

Local Road Program

- The Local Road Program Packet explains options for townships to secure additional funding
 - Township dollars
 - Millages
 - Special Assessment Districts(SAD's)

Funding Roads Locally

- Across the county, local roads funding come from a variety of sources

